

woodville

Well Living Homes



Product Sheet

Welcome

W

We aim to be part of a sustainable construction creating environmentally friendly, healthy and ecological spaces.

Therefore, all our materials require minimal energy and water consumption during its production

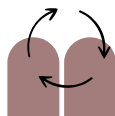
If you have any questions or need personalized attention, do not hesitate to contact us:
comunicacion@bewoodville.com

INDEX

mohma Compact	5
mohma Standard	11
mohma Premium	19
Finishes	25
Complex	28
Communities	29
Procurement process	30

Designed under Passivhaus standards, mohma is a light and natural production residence that seeks to promote well-being and comfort in an unbeatable setting: nature.

The reduced energy consumption, due to its energy insulation and ventilation systems, allow constant and efficient climate control of the home.



Flexibility

Combine the two floors and the units to make your home a unique place.



Freedom

Customize your space, wherever and whenever you want.



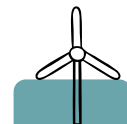
Health

Benefit from the peace and calm of wood - an exceptionally insulating, durable and flexible material.



Design

Live the unique, innovative, and sustainable style of one of the most renowned architects from Spain.



Commitment

Enjoy your home leaving no carbon footprint with mohma, made with reusable materials.



Quality

Appreciate each day, the materials carefully chosen to ensure insulation and climate control.

mohma

3 new ways of living

W

Compact



Standard



Premium



01

mohma
Compact



mohma Compact

W

A place to escape to
whenever you want.

Forget your daily worries in your mohma Compact. A minimalistic and sophisticated home with a pure interior in which no detail can cloud your mind.

The blank space you need to disconnect from daily stress and connect with yourself.



mohma
Compact

W



mohma Compact

Livable Surface area 20.4 sqm

Capacity 2-4 people

Total surface area 35.4 sqm

Usable area 28.5 sqm

Built volume 81.5 m3

L5.1 x W4.0 x H4.6 m

Loft

TECHNICAL ROOM 2.0 sqm

LOUNGE 4.4 sqm

BEDROOM 4.4 sqm

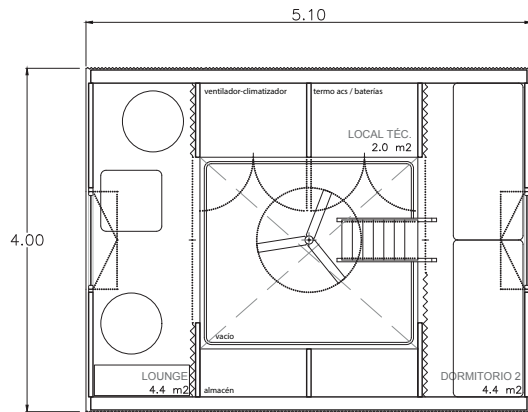
Ground Floor

PORCH 2.0 sqm

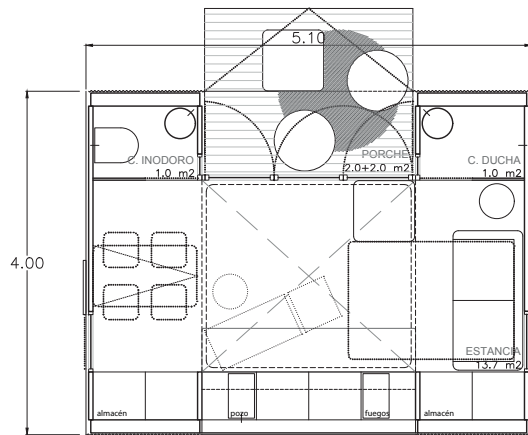
STAY AREA 13.7 sqm

BATHROOM 1.0 sqm

SHOWER ROOM 1.0 sqm



loft



ground floor



mohma Compact

Indoor

W





02

mohma
Standard

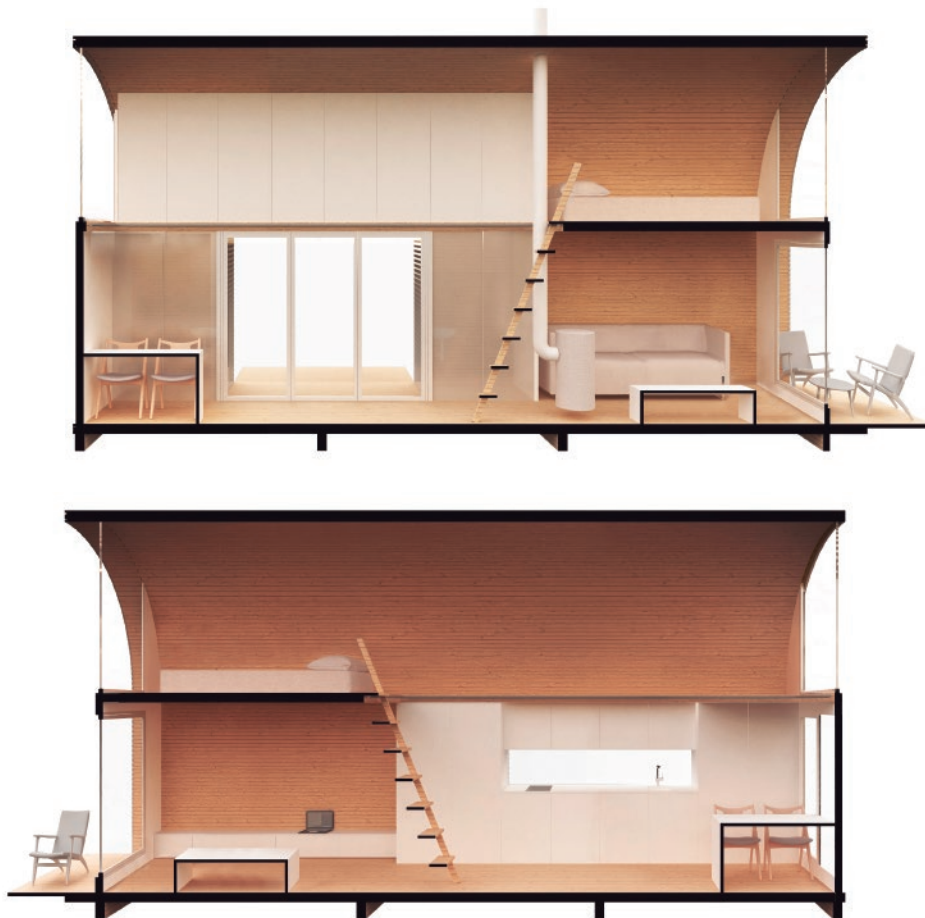


mohma Standard

New environments and
experiences to discover.

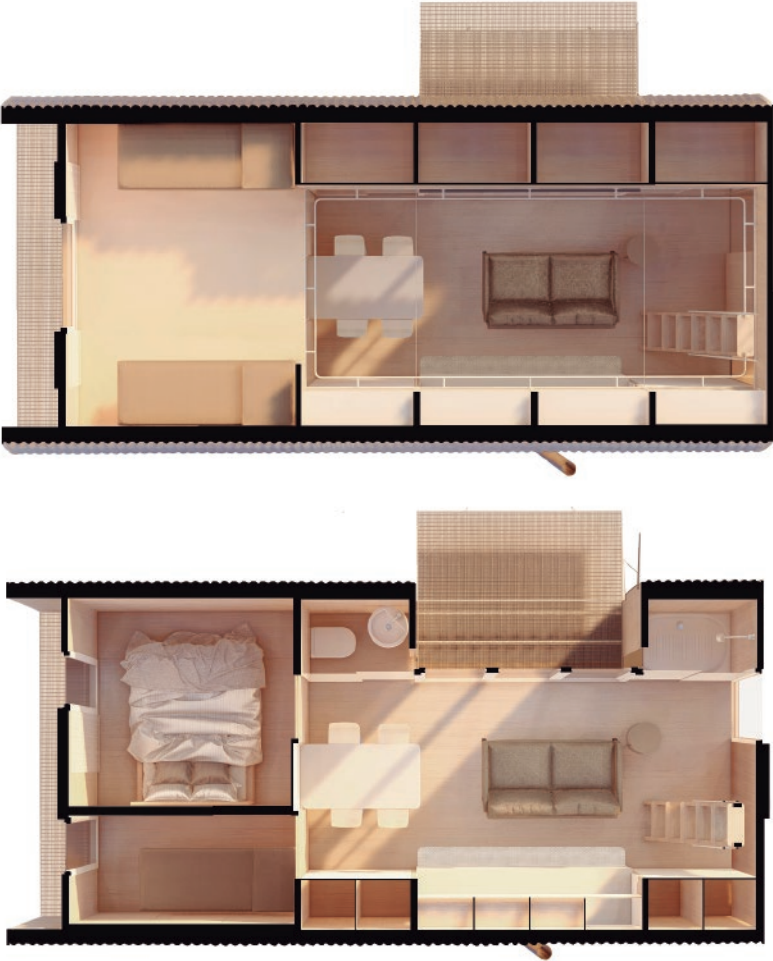
Enjoy each stay at mohma Standard,
however you want. A truly versatile home
equipped with all you need, that adapts to
your needs and with quality materials so
that you can enjoy what really matters,
your well-being.

W



mohma
Standard - a

W



mohma Standard - a

Livable Surface area 32.8 sqm

Capacity 4-6 people

Total surface area 52.4 sqm

Usable area 41.4 sqm

Built volume 131.1 m3

L8.2 x W4.0 x H4.6 m

Loft

TECHNICAL ROOM 4.0 sqm

BEDROOM 3 9.0 sqm

Ground floor

PORCH 2.0 sqm

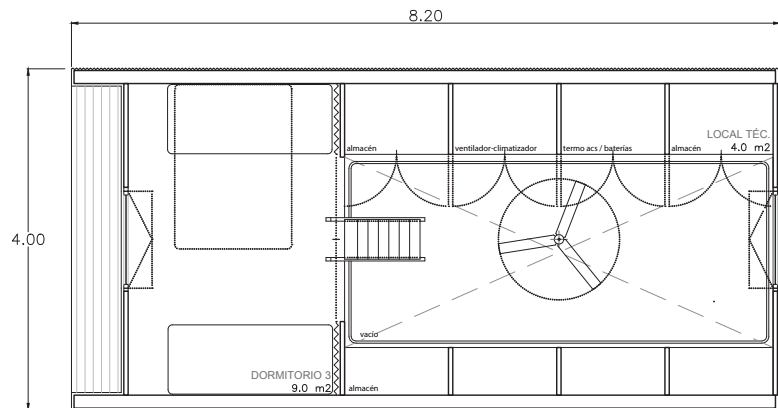
STAY AREA 13.7 sqm

BATHROOM 1.0 sqm

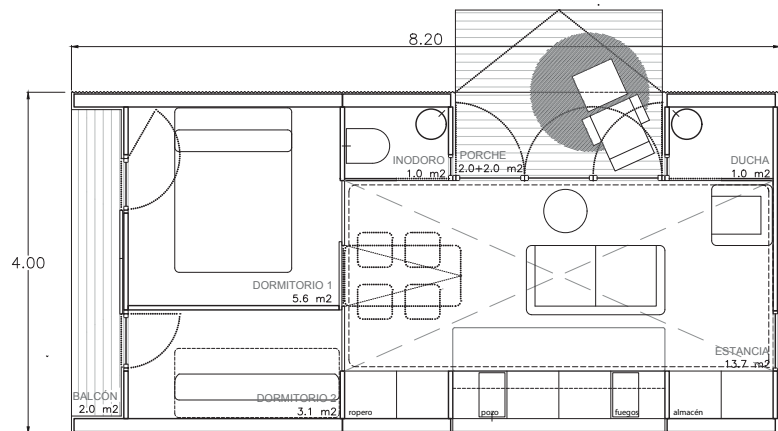
SHOWER ROOM 1.0 sqm

BEDROOM 1 5.6 sqm

BEDROOM 2 3.1 sqm



loft

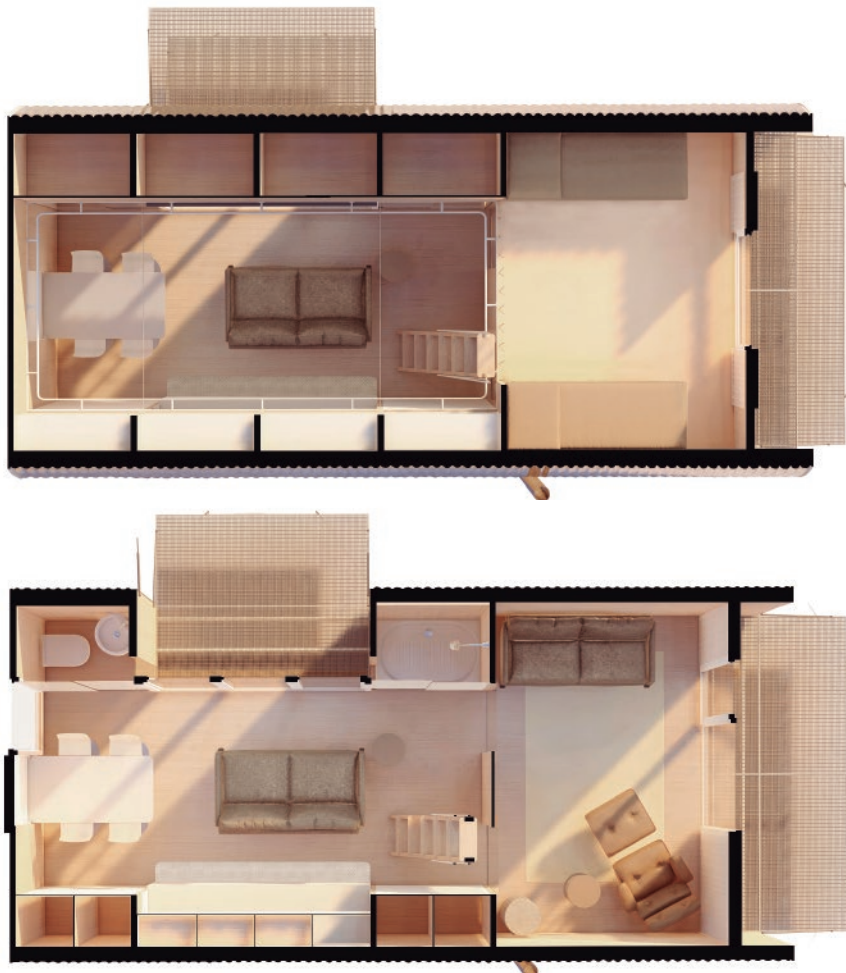


ground floor



mohma
Standard - b

W



mohma Standard - b

Livable Surface area 32.8 sqm

Capacity 4 people

Total surface area 52.4 sqm

Usable area 41.4 sqm

Built volume 131.1 m3

L8.2 x W4.0 x H4.6 m

Loft

TECHNICAL ROOM 4.0 sqm

BEDROOM 9.0 sqm

Ground floor

PORCH 2.0 sqm

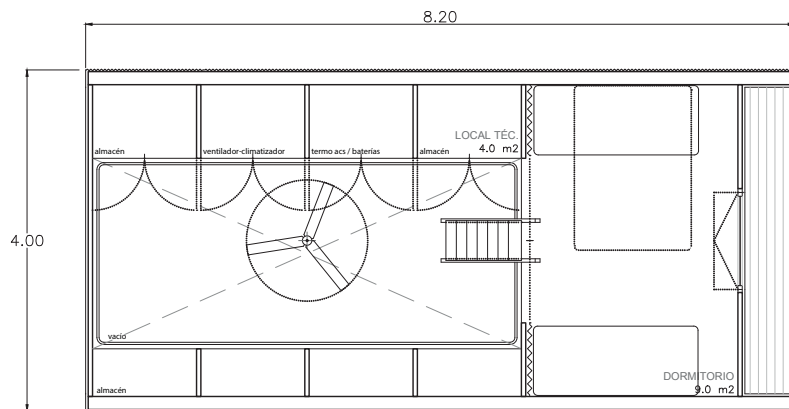
STAY AREA 13.7 sqm

BATHROOM 1.0 sqm

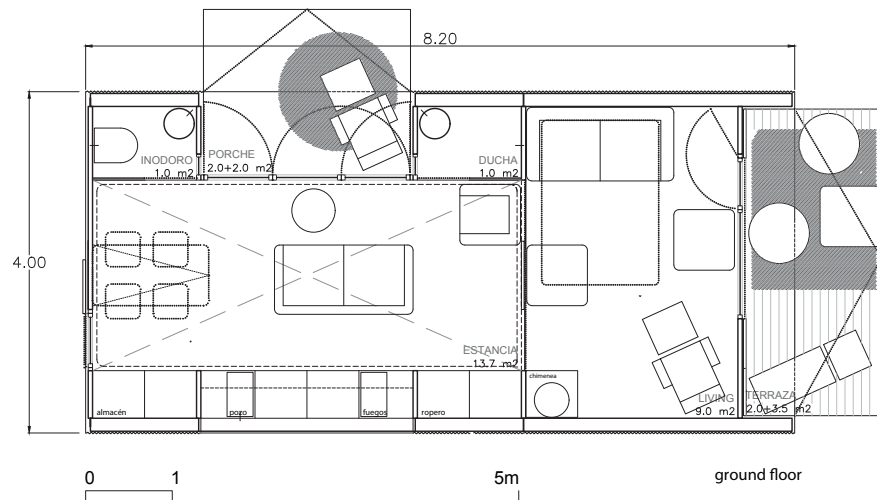
SHOWER ROOM 1.0 sqm

LIVING 9.0 sqm

BALCONY 2.0 sqm



loft

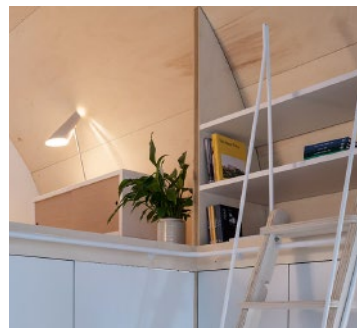


ground floor

mohma Standard

Indoor

W





03

mohma
Premium



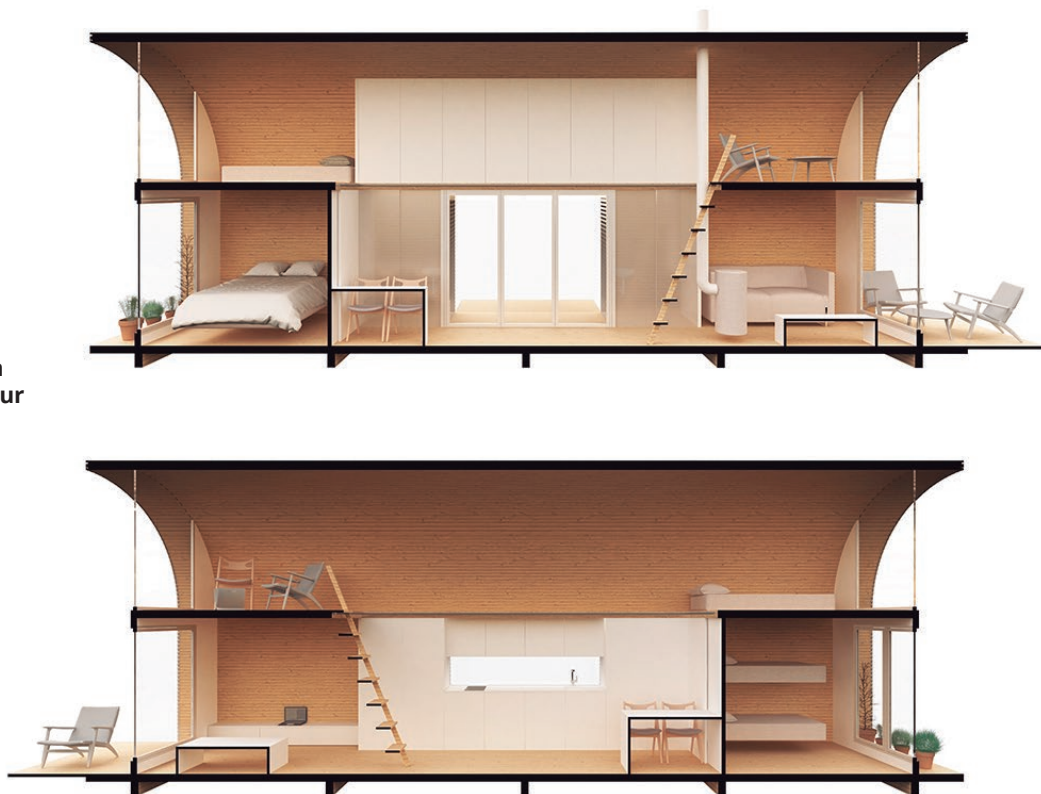
mohma Premium

W

All your plans,
big time.

Find your new lifestyle at mohma Premium. Guest, reading or leisure rooms, all under one roof.

A flexible and customizable design, so that your home is more yours than ever, and with enough space to let your imagination run wild.



mohma Premium

W



mohma Premium

Livable Surface area 45.0 sqm

Capacity 6-8 people

Total surface area 74.5 sqm

Usable area 61.4 sqm

Built volume 179.9 m3

L11.3 x W4.0 x H4.6 m

Loft

TECHNICAL ROOM 4.0 sqm

BEDROOM 2 9.0 sqm

LOUNGE 9.0 sqm

Ground floor

PORCH 2.0 sqm

STAY AREA 13.7 sqm

TOILET ROOM 1.0 sqm

CLOSET 1.0 sqm

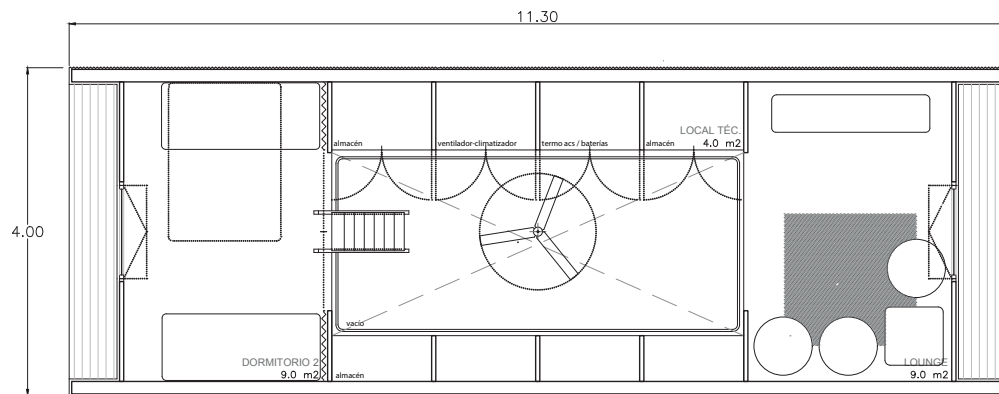
LIVING 9.0 sqm

TERRACE 2.0 sqm

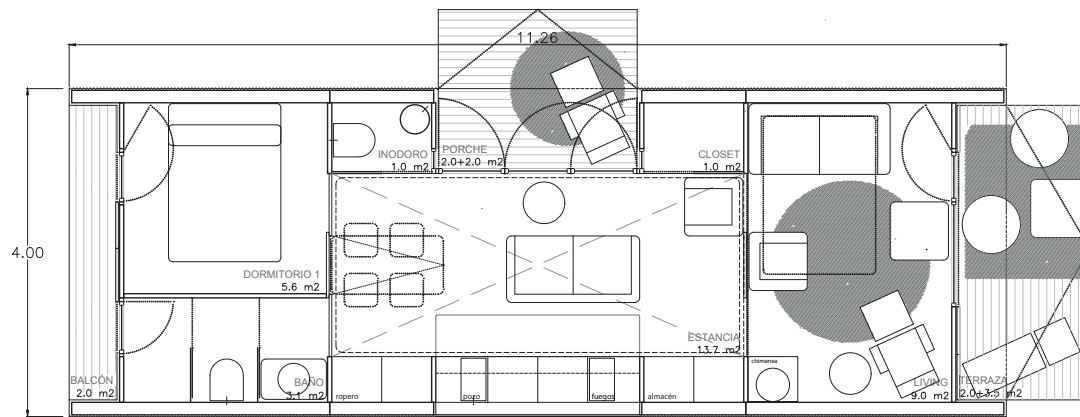
BATHROOM 3.1 sqm

BEDROOM 1 5.6 sqm

BALCONY 2.9 sqm



loft



ground floor

0 1 5m



mohma Premium

Indoor

W





It's up to you.

Find the comfort level that best suits you and your needs with the different mohma finishes.

Basic

Equip it with whatever you want, or not. With wide spaces, and with nothing to distract you, your imagination will take flight.

Complete timber structure + Outer profiled galvanized metal sheet + Electrical and water installations + DHW thermal production + Tramex balcony + Full bathroom + Bathroom towel radiator + Interior and exterior carpentry + Wooden cladding on walls and ceiling + Glassware + Ladder + Efficient ventilation with heat recovery.

Basic +

Furnished with everything you need to move in as soon as your mohma is installed. There is always time to give it your own touch that makes it unique.

With all the basics plus LED lighting + Kitchen furniture + Appliances + Extractor fan + Front cabinets + Upper storage cabinets + 3-blade fan.

*** Equipment subject to change. Latest version on the web or by scanning the QR**

Qualities

Wood certificated FSC® and
PEFC - Sustainable Forestry.

16 cm Structural Insulating
Panel (Plywood board).

Outer profiled galvanized
metal sheet.

Outdoor timber carpentry.

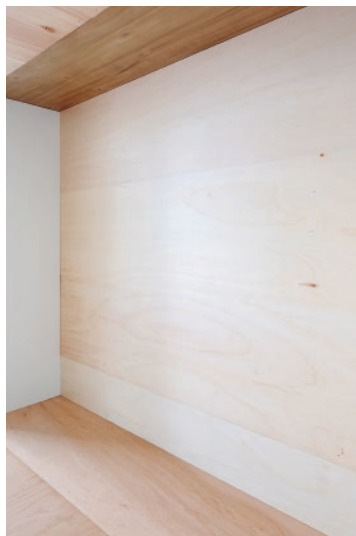
Low transmittance glazed.

Energy efficient.

Biophilic design vault.

Envelope optimization.

LED lighting.



Extra equipment

W

Customizable configuration.

Design it to your liking and enjoy your mohma with meticulously cared details.

Air Conditioning

Stove (economic wood-fired / wood-fired / pellet) + iron sheet tray + fireplace / Wall Split.

Indoor equipment

Folding dining table screen / Lounge stay closure / Shower door closure / Fall protection / Translucent corridor blinds / Kitchen flooring metal sheet protection / Additional ladder.

Outdoors

Sliding shutter / 3-leaf folding joinery / Swing platform tramex porch / Swing platform tramex porch / Tramex loft visor.

Choice according to customer needs

Home automation (under development)
Self-sufficient energy
Water cycle (under development)

mohma
Complex



Communities

W

Are you dreaming big?

Us too. We love challenges! mohma Complex and its infinity of possibilities is designed for communities that seek to share and unwind, making every moment a memory.

Unleash your business and let us get down to work. We already have some ideas up our sleeves.

The design team keeps on developing new retreats in the wild to make your dreams come true.

Write us if you have any ideas and think we can collaborate. You already know that we love challenges!

comunicacion@bewoodville.com

mohma Resort Complex

The luxury of nature. A weekend getaway in nature, but with all the luxuries of a city hotel.

mohma Summer Complex

The luxury of fun. Summer language camps in nature for the little ones in which to explore and learn to take care of what surrounds us.

mohma Veterans Complex

The luxury of having time. A new home of well-being, peace, and happiness for our elders, who have always been there when we needed them most.

mohma Golf Complex

The luxury of a passion. Private shelters next to a golf course where you can focus and unwind, without having to travel.

Procurement process

W

You still keen in our mohmas? We explain you in detail what are the steps to follow so that you can get the one you like the most. We make it easy for you!

- | | | |
|-----------|-------------------------|---|
| 01 | Location check | Installation permissions.
Viability.
Land accessibility communication.
Shipping quote. |
| 02 | Contract signing | Model specification.
Includes: Shipping and payment terms, warranty, full specifications. |
| 03 | Payment | To be consulted. |
| 04 | Production | Estimated production time according to contract. |
| 05 | Shipping quote | Prior confirmation of the client of the adequacy of the land, and compliance with the payment conditions. |
| 06 | Installation | 7 - 10 days estimated time * To take into account weather conditions. |

Product with 3 years of warranty

Looking for more models?

Discover our shelters wahbi here



Update our catalog by scanning the following codes.



ES



EN



FR



woodville

697 44 95 34
948 11 35 45

C/ Etxesakan, 5, 1º - P2
31180 Zizur Mayor, Navarra

comunicacion@bewoodville.com
www.bewoodville.com
